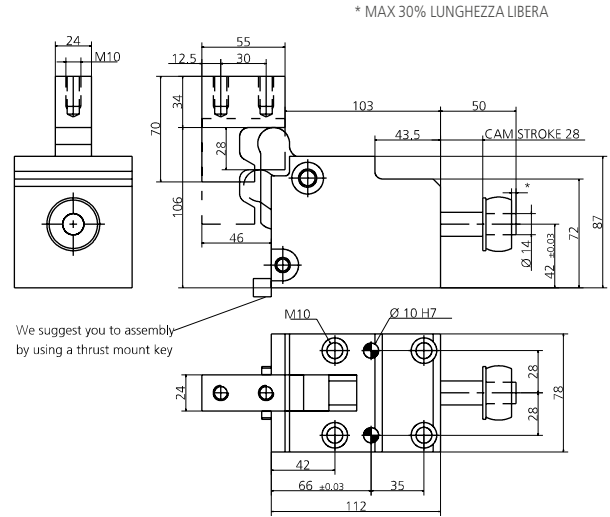
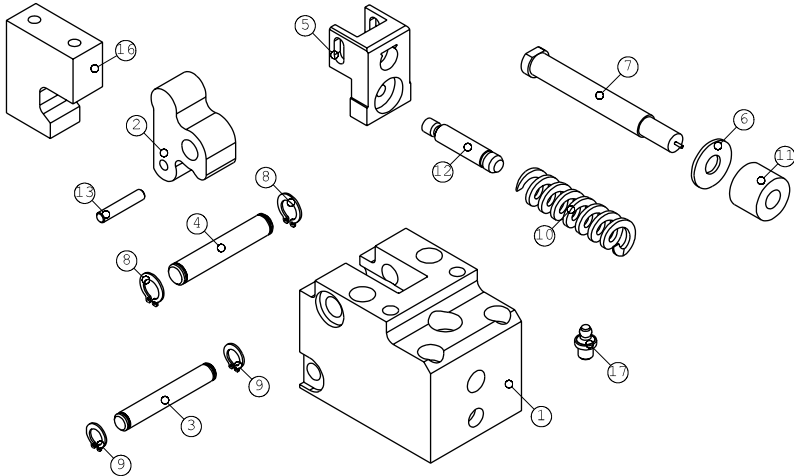


# 0141.0320 - CAM ML320

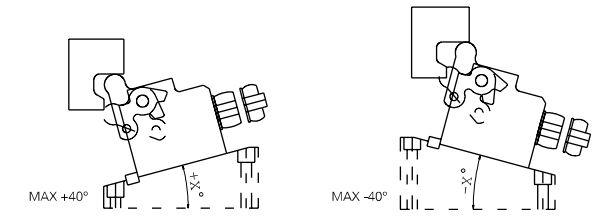
FORZA INIZIALE DI ESTRAZIONE / INITIAL EXTRACTION FORCE **70 daN** SFORZO MAX TRANCIO **5000 daN**  
 RÜCKZUGSKRAFT / FORCE INITIALE D'EXTRACTION  
 FORZA FINALE DI ESTRAZIONE / FINAL FORCE OF EXTRACTION **320 daN** CUTTING MAX FORCE  
 ENDKRAFT DER EXTRACTION / FORCE FINALE D'EXTRACTION MAXIMALE SCHNITTKRAFT  
 EFFORT MAXI DÉCOUPE



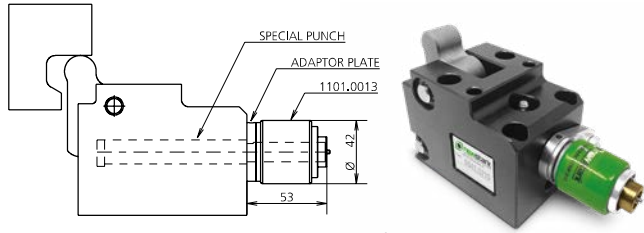
We suggest you to assembly by using a thrust mount key

POS.	CODE	DESCRIPTION	Q.TY
001	<b>8000.0041.0320</b>	CORPO CAMMA / CAM BODY / GRUNDGEHÄUSE	1
002	<b>8001.4041.0320.000</b>	LEVA / LEVER / NOCKE 0	1
002	<b>8001.4041.0320.620</b>	LEVA / LEVER / NOCKE +0.01 +20	1*OPTION
002	<b>8001.4041.0320.640</b>	LEVA / LEVER / NOCKE +20.01 +40	1*OPTION
002	<b>8001.4041.0320.720</b>	LEVA / LEVER / NOCKE -0.01 -20	1*OPTION
002	<b>8001.4041.0320.740</b>	LEVA / LEVER / NOCKE -20.01 -40	1*OPTION
003	<b>8005.0780.0740.100.001</b>	PERNO / PIN / STIFT	1
004	<b>8005.0780.0740.120.001</b>	PERNO / PIN / STIFT	1
005	<b>8014.4041.0320</b>	PORTA PUNZONE / GATE PUNCH / STEMPHALTEPLATTE	1
006	<b>8006.0020.0350.141.001</b>	RONDELLA / WASHER / UNTERLEGSCHIBE	1
007	<b>09MJBM2.160.121</b>	MJB_PUNZONE TC CON ESPULSORE / HEADED PUNCH WITH EJECTOR / SCHNEIDSTEMPEL MIT ABSTOSSER 16 121.5	1
007	<b>09MJXM2.160.121</b>	MJX_PUNZONE TC CON ESPULSORE / HEADED PUNCH WITH EJECTOR / SCHNEIDSTEMPEL MIT ABSTOSSER 16 121.5	1*OPTION
007	<b>09MJOM2.160.121</b>	MJO_PUNZONE TC CON ESPULSORE / HEADED PUNCH WITH EJECTOR / SCHNEIDSTEMPEL MIT ABSTOSSER 16 121.5	1*OPTION
007	<b>09MJJM2.160.121</b>	MJJ_PUNZONE TC CON ESPULSORE / HEADED PUNCH WITH EJECTOR / SCHNEIDSTEMPEL MIT ABSTOSSER 16 121.5	1*OPTION
007	<b>09MJHM2.160.121</b>	MJH_PUNZONE TC CON ESPULSORE / HEADED PUNCH WITH EJECTOR / SCHNEIDSTEMPEL MIT ABSTOSSER 16 121.5	1*OPTION
007	<b>09MJKM2.160.121</b>	MJK_PUNZONE TC CON ESPULSORE / HEADED PUNCH WITH EJECTOR / SCHNEIDSTEMPEL MIT ABSTOSSER 16 121.5	1*OPTION
007	<b>09MJNM2.160.121</b>	MJN_PUNZONE TC CON ESPULSORE / HEADED PUNCH WITH EJECTOR / SCHNEIDSTEMPEL MIT ABSTOSSER 16 121.5	1*OPTION
007	<b>09MJLM2.160.121</b>	MJL_PUNZONE TC CON ESPULSORE / HEADED PUNCH WITH EJECTOR / SCHNEIDSTEMPEL MIT ABSTOSSER 16 121.5	1*OPTION
007	<b>09MJRM2.160.121</b>	MJR_PUNZONE TC CON ESPULSORE / HEADED PUNCH WITH EJECTOR / SCHNEIDSTEMPEL MIT ABSTOSSER 16 121.5	1*OPTION
007	<b>09MJVM2.160.121</b>	MJV_PUNZONE TC CON ESPULSORE / HEADED PUNCH WITH EJECTOR / SCHNEIDSTEMPEL MIT ABSTOSSER 16 121.5	1*OPTION
007	<b>09MJYM2.160.121</b>	MJY_PUNZONE TC CON ESPULSORE / HEADED PUNCH WITH EJECTOR / SCHNEIDSTEMPEL MIT ABSTOSSER 16 121.5	1*OPTION
007	<b>09MJZM2.160.121</b>	MJZ_PUNZONE TC CON ESPULSORE / HEADED PUNCH WITH EJECTOR / SCHNEIDSTEMPEL MIT ABSTOSSER 16 121.5	1*OPTION
008	<b>9004.1120.001</b>	SEGER / SEEGER / SEEGERRING	2
009	<b>9004.1100.001</b>	SEGER / SEEGER / SEEGERRING	2
010	<b>9009.2000.0890.250</b>	MOLLA / SPRING / FEDER	1
011	<b>8060.1432.020.E090.001</b>	MOLLA IN GOMMA / RUBBER SPRING / ABSTREIFFEDER	1
012	<b>8005.0665.0500.120.001</b>	PERNO / PIN / STIFT	1
013	<b>8005.0350.0350.080.001</b>	PERNO / PIN / STIFT	1
016	<b>8003.0700.0550.240.001</b>	INCUDINE / ANVIL / TREIBER	1*OPTION
017	<b>9006.002</b>	INGRASSATORE / NIPPLE / SCHMIERUNG	1

002 (8001) LEVA / LEVER / NOCKE

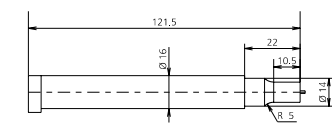


8124.0141.0320 KIT ADATTAMENTO STARK STRIPPER / STARK-STRIP ADAPTION KIT / STARK-STRIP ADAPTIONSSATZ

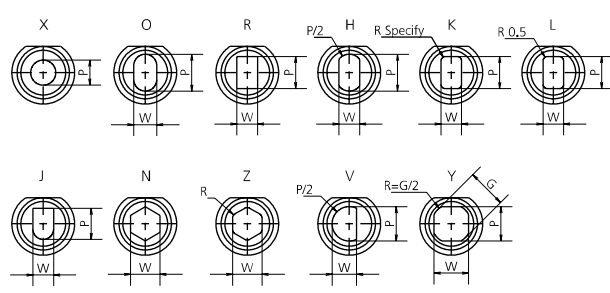
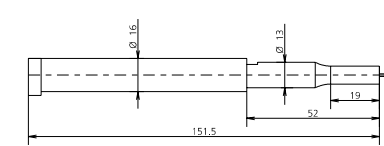


Il kit comprende il punzone, la piastrina di adattamento e le viti di fissaggio. Lo stark-stripper va ordinato a parte (vedi la sezione del catalogo dedicata)  
 The kit includes the punch, the adapter plate and the fixing screws. The stark-stripper must be ordered separately (see the dedicated catalog section)  
 Das Kit enthält den Stempel, die Adapterplatte und die Befestigungsschrauben. Der Stark-muss separat bestellt werden (siehe den entsprechenden Abschnitt des Katalogs)

007 (09M) PUNZONE TC / HEADED PUNCH / SCHNEIDSTEMPEL ISO8020



007 (09S) PUNZONE SPECIALE PER KIT 8124 / SPECIAL PUNCH FOR KIT 8124 / SPEZIALSTEMPEL FÜR BAUSATZ 8124



MODELLO D'ORDINE / ORDER EXAMPLE / BESTELLBEISPIEL / MODÈLE DE COMMANDE

MODEL **0141.0320** INCLINATION **+10°** OPTION CODE **8001.4041.0320.620**