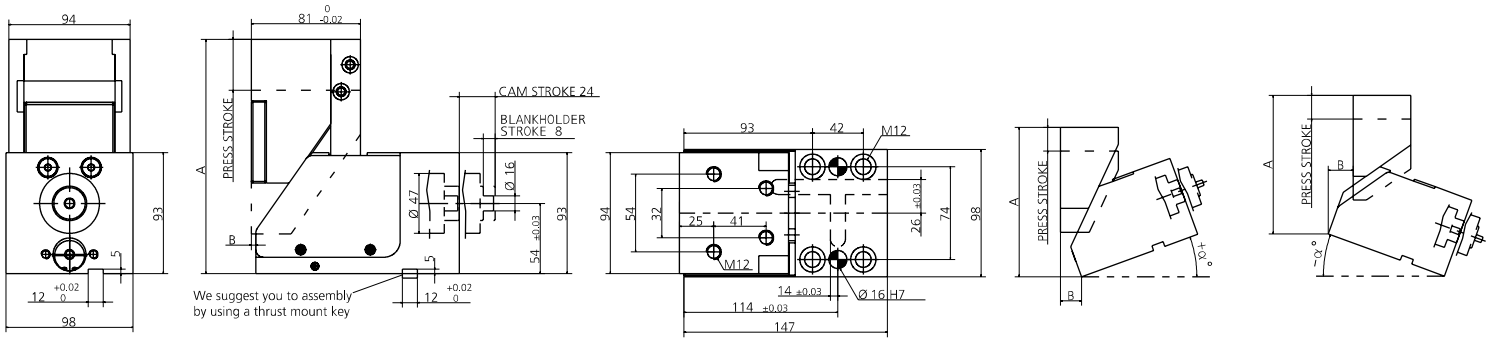


FORZA INIZIALE DI ESTRAZIONE / INITIAL EXTRACTION FORCE **695 daN**
 RÜCKZUGSKRAFT / FORCE INITIALE D'EXTRACTION
 FORZA FINALE DI ESTRAZIONE / FINAL FORCE OF EXTRACTION **1530 daN**
 ENDKRAFT DER EXTRACTION / FORCE FINALE D'EXTRACTION

SFORZO MAX TRANCIO **6000 daN**
 CUTTING MAX FORCE
 MAXIMALE SCHNITTKRAFT
 EFFORT MAXI DÉCOUPE

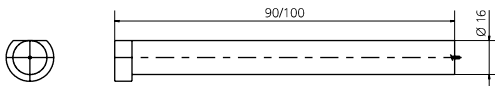


We suggest you to assembly by using a thrust mount key

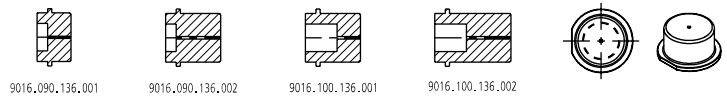
| α° | PRESS STROKE | A | B |
|----------------|--------------|--------|-------|
| 0° | 34.1 | 172.17 | 3.82 |
| +5° | 32.05 | 174.98 | 12.37 |
| +10° | 29.6 | 173.74 | 20.09 |
| +15° | 26.9 | 171.99 | 31.29 |
| -5° | 30.6 | 170.17 | 1.82 |
| -10° | 27.8 | 158.17 | 14.68 |
| -15° | 25.65 | 151.75 | 16.68 |

* PER INCLINAZIONI FUORI STANDARD RIVOLGERSI ALL'UFFICIO TECNICONEWSTARK / * FOR NON-STANDARD INCLINATIONS, PLEASECONTACT NEWSTARK TECHNICAL OFFICE.
 / * FÜR NICHT STANDARDMÄSSIGE NEIGUNGEN WENDEN SIE SICH BITTE AN DAS TECHNISCHE BÜRO VON NEWSTARK

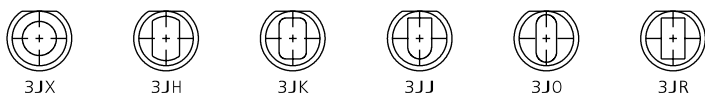
0011 (9090) PUNZONE SBOZZATO / BLANK PUNCH / ROHLING SCHNEIDSTEMPEL ISO8020



013 (9016) PREMILAMIERA SBOZZATO / BLANK-BLANKHOLDER / ROHLING BLECHHALTER



011 (093J_) PUNZONE SAGOMATO / SHAPED PUNCH / GEFORMT SCHNEIDSTEMPEL ISO8020



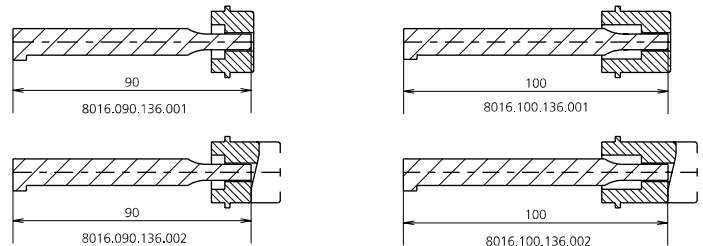
013 (8016) PREMILAMIERA SAGOMATO / SHAPED BLANKHOLDER / GEFORMT BLECHHALTER (OPTION)



015 (9003) SENSORE / SENSOR / SENSOR



15 PATENT PENDING



0147.6956 - CAM MASE695-16

FORZA INIZIALE DI ESTRAZIONE / INITIAL EXTRACTION FORCE **695 daN**

RÜCKZUGSKRAFT / FORCE INITIALE D'EXTRACTION

FORZA FINALE DI ESTRAZIONE / FINAL FORCE OF EXTRACTION **1530 daN**

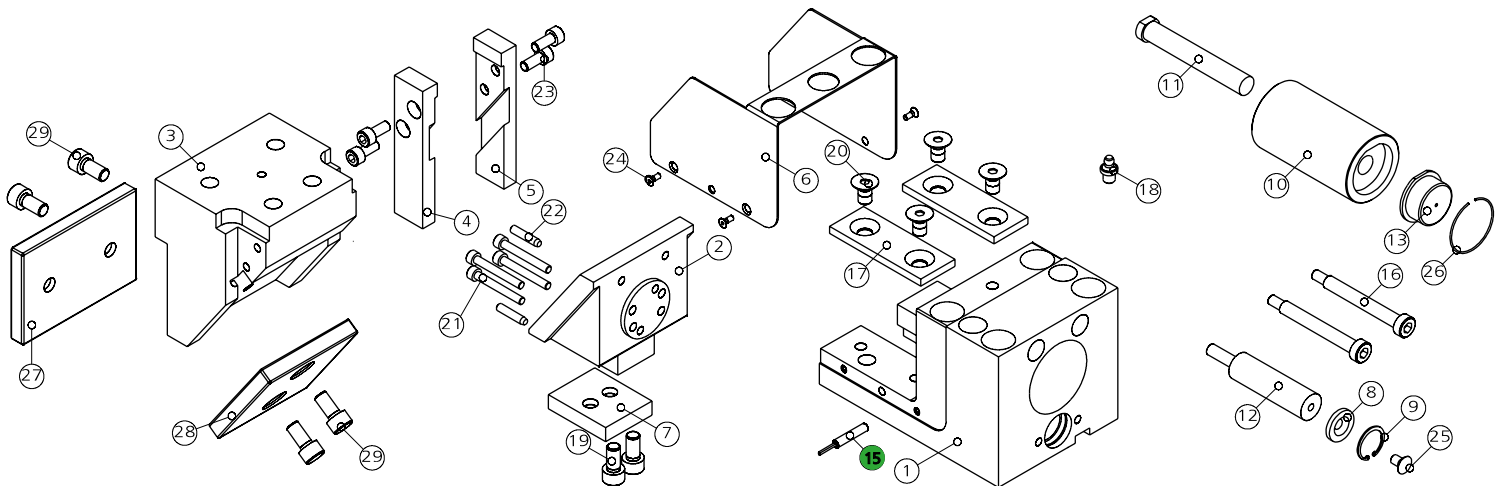
ENDKRAFT DER EXTRACTION / FORCE FINALE D'EXTRACTION

SFORZO MAX TRANCIO **6000 daN**

CUTTING MAX FORCE

MAXIMALE SCHNITTKRAFT

EFFORT MAXI DÉCOUPE



| POS. | CODE | DESCRIPTION | Q.TY |
|------|-------------------------------|---|----------|
| 001 | 8000.0047.0695 | CORPO CAMMA / CAM BODY / GRUNDGEHÄUSE | 1 |
| 002 | 8111.0047.0006.00.001 | SLITTA / SLIDER / LAGERKEIL 0° | 1*CHOOSE |
| 002 | 8111.0047.0006.05.001 | SLITTA / SLIDER / LAGERKEIL +5° | 1*CHOOSE |
| 002 | 8111.0047.0006.10.001 | SLITTA / SLIDER / LAGERKEIL +10° | 1*CHOOSE |
| 002 | 8111.0047.0006.15.001 | SLITTA / SLIDER / LAGERKEIL +15° | 1*CHOOSE |
| 003 | 8116.0047.0006.00.001 | CUNEO / WEDGE / DRUCKSTÜCK 0° | 1*CHOOSE |
| 003 | 8116.0047.0006.05.001 | CUNEO / WEDGE / DRUCKSTÜCK -5° | 1*CHOOSE |
| 003 | 8116.0047.0006.10.001 | CUNEO / WEDGE / DRUCKSTÜCK -10° | 1*CHOOSE |
| 003 | 8116.0047.0006.15.001 | CUNEO / WEDGE / DRUCKSTÜCK -15° | 1*CHOOSE |
| 004 | 8115.0047.0006.00.001 | STAFFA DI AGGANCIAMENTO / BRACKET ATTACHMENTS / BRACKETBEFESTIGUNG 0° | 1*CHOOSE |
| 004 | 8115.0047.0006.05.001 | STAFFA DI AGGANCIAMENTO / BRACKET ATTACHMENTS / BRACKETBEFESTIGUNG -5° | 1*CHOOSE |
| 004 | 8115.0047.0006.10.001 | STAFFA DI AGGANCIAMENTO / BRACKET ATTACHMENTS / BRACKETBEFESTIGUNG -10° | 1*CHOOSE |
| 004 | 8115.0047.0006.15.001 | STAFFA DI AGGANCIAMENTO / BRACKET ATTACHMENTS / BRACKETBEFESTIGUNG -15° | 1*CHOOSE |
| 005 | 8115.0047.0006.00.002 | STAFFA DI AGGANCIAMENTO / BRACKET ATTACHMENTS / BRACKETBEFESTIGUNG 0° | 1*CHOOSE |
| 005 | 8115.0047.0006.05.002 | STAFFA DI AGGANCIAMENTO / BRACKET ATTACHMENTS / BRACKETBEFESTIGUNG -5° | 1*CHOOSE |
| 005 | 8115.0047.0006.10.002 | STAFFA DI AGGANCIAMENTO / BRACKET ATTACHMENTS / BRACKETBEFESTIGUNG -10° | 1*CHOOSE |
| 005 | 8115.0047.0006.15.002 | STAFFA DI AGGANCIAMENTO / BRACKET ATTACHMENTS / BRACKETBEFESTIGUNG -15° | 1*CHOOSE |
| 006 | 8010.0047.0695 | COPERCHIO / COVER / KOPFPLATTE | 1 |
| 007 | 8011.0047.0695 | PIASTRA / PLATE / PLATTE | 1 |
| 008 | 8006.0130.0218.065.001 | RONDELLA / WASHER / UNTERLEGSCHIBE | 1 |
| 009 | 9004.2220.001 | SEEGER / SEEGER / SEEGERRING | 1 |
| 010 | 9030.016.001 | CILINDRO SPECIALE / SPECIAL CYLINDER / SPEZIALZYLINDER | 1 |
| 011 | 9090.3JBM2.160.090 | PUNZONE SBOZZATO TC CON ESPULSORE / HEADED PUNCH WITH EJECTOR / SCHNEIDSTEMPEL MIT ABSTOSSER 10 90 | 1*OPTION |
| 011 | 9090.3JBM2.160.100 | PUNZONE SBOZZATO TC CON ESPULSORE / HEADED PUNCH WITH EJECTOR / SCHNEIDSTEMPEL MIT ABSTOSSER 10 100 | 1*OPTION |
| 011 | 093J_M2.160.090 | PUNZONE TC CON ESPULSORE / HEADED PUNCH WITH EJECTOR / SCHNEIDSTEMPEL MIT ABSTOSSER 10 90 | 1*OPTION |

| POS. | CODE | DESCRIPTION | Q.TY |
|------|-------------------------------|--|----------|
| 011 | 093J_M2.160.100 | PUNZONE TC CON ESPULSORE / HEADED PUNCH WITH EJECTOR / SCHNEIDSTEMPEL MIT ABSTOSSER 10 100 | 1*OPTION |
| 012 | 9000.0025.0019.004 | CILINDRO DI RITORNO / RETURN CYLINDER / RÜCK ZYLINDER | 1 |
| 013 | 9016.090.136.001 | PREMILAMIERA CORTO / SHORT BLANKHOLDER / KURZ BLECHHALTER 90MM | 1*CHOOSE |
| 013 | 9016.090.136.002 | PREMILAMIERA LUNGO / LONG BLANKHOLDER / LANG BLECHHALTER 90MM | 1*CHOOSE |
| 013 | 9016.100.136.001 | PREMILAMIERA CORTO / SHORT BLANKHOLDER / KURZ BLECHHALTER 100MM | 1*CHOOSE |
| 013 | 9016.100.136.002 | PREMILAMIERA LUNGO / LONG BLANKHOLDER / LANG BLECHHALTER 100MM | 1*CHOOSE |
| 013 | 8016.090.136.001 | PREMILAMIERA CORTO / SHORT BLANKHOLDER / KURZ BLECHHALTER 90MM | 1*OPTION |
| 013 | 8016.090.136.002 | PREMILAMIERA LUNGO / LONG BLANKHOLDER / LANG BLECHHALTER 90MM | 1*OPTION |
| 013 | 8016.100.136.001 | PREMILAMIERA CORTO / SHORT BLANKHOLDER / KURZ BLECHHALTER 100MM | 1*OPTION |
| 013 | 8016.100.136.002 | PREMILAMIERA LUNGO / LONG BLANKHOLDER / LANG BLECHHALTER 100MM | 1*OPTION |
| 015 | 9003.0001 | SENSORE DI SICUREZZA / SECURITY SENSOR / SENSOR FÜR SICHERHEIT | 1*OPTION |
| 016 | 9008.0608.060 | VITE A COLLETO / SHOULDER SCREW / ANSATZSCHRAUBE | 2 |
| 017 | 9012.0750.0280.050.001 | PIASTRA DI SCORRIMENTO / WEAR PLATE / DRUCKPLATTE | 2 |
| 018 | 9006.002 | INGRASSATORE / NIPPLES / SCHMIERUNG | 1 |
| 019 | 9007.08.012.088.1.9327 | VITE / SCREW / SCHRAUBE M8X12 | 2 |
| 020 | 9007.08.010.129.1.5933 | VITE / SCREW / SCHRAUBE M8X10 | 4 |
| 021 | 9007.05.025.129.1.4762 | VITE / SCREW / SCHRAUBE M5X25 | 4 |
| 022 | 9028.05.012.8735 | SPINA CILINDRICA / DOWEL PIN / ZYLINDERSTIFT D5X12 | 2 |
| 023 | 9007.06.012.129.1.4762 | VITE / SCREW / SCHRAUBE M6X12 | 4 |
| 024 | 9007.03.005.048.1.7687 | VITE / SCREW / SCHRAUBE M3X5 | 4 |
| 025 | 9007.06.014.129.1.5933 | VITE / SCREW / SCHRAUBE M6X14 | 1 |
| 026 | 9004.2350.001 | SEEGER / SEEGER / SEEGERRING | 1 |
| 027 | 8012.0940.0650.100.001 | PIASTRA DI SCORRIMENTO / WEAR PLATE / DRUCKPLATTE | 1 |
| 028 | 8012.0750.0730.100.001 | PIASTRA DI SCORRIMENTO / WEAR PLATE / DRUCKPLATTE | 1 |
| 029 | 9007.08.016.109.1.9327 | VITE / SCREW / SCHRAUBE M8X16 | 4 |