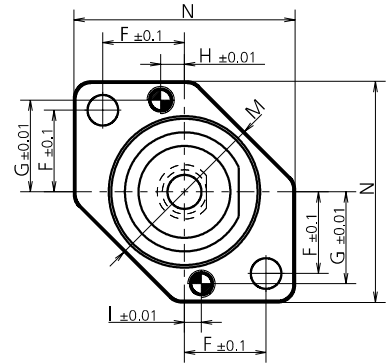
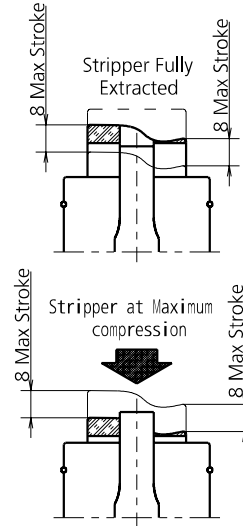
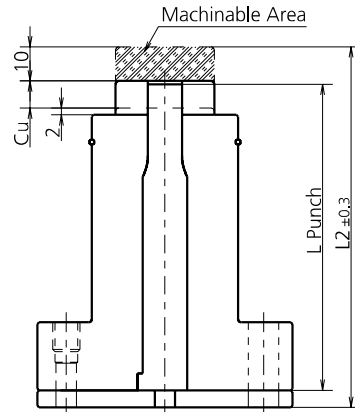
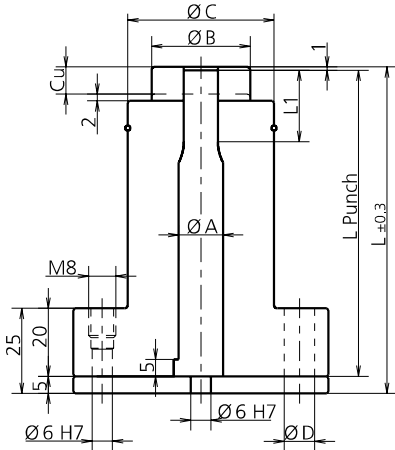




# 1501 - UNITÀ DI PUNZONATURA AD AZOTO

NITROGEN PUNCHING UNIT / STICKSTOFF-STANZEINHEIT / UNITÉ DE POINÇONNAGE À L'AZOTE



MODEL	Ø A	Ø B	Ø C	Ø D	F	G	H	I	M	N	L PUNCH	L	L1	L2	STROKE	INITIAL EXTRACTION FORCE (DaN)
1501.1001	10	23	35	9	19	22	7	5	42	55	90/100	96/106	25	106/116	8	125
1501.1002	10	23	35	9	19	22	7	5	42	55	90/100	96/106	25	106/116	8	255
1501.1003	10	23	35	9	19	22	7	5	42	55	90/100	96/106	25	106/116	8	380
1501.1004	10	23	35	9	19	22	7	5	42	55	90/100	96/106	25	106/116	8	505
1501.1301	13	29	43	9	24	27	7	5	50	65	90/100	96/106	25	106/116	8	175
1501.1302	13	29	43	9	24	27	7	5	50	65	90/100	96/106	25	106/116	8	350
1501.1303	13	29	43	9	24	27	7	5	50	65	90/100	96/106	25	106/116	8	520
1501.1304	13	29	43	9	24	27	7	5	50	65	90/100	96/106	25	106/116	8	695
1501.1601	16	29	43	9	24	27	7	5	50	65	90/100	96/106	25	106/116	8	175
1501.1602	16	29	43	9	24	27	7	5	50	65	90/100	96/106	25	106/116	8	350
1501.1603	16	29	43	9	24	27	7	5	50	65	90/100	96/106	25	106/116	8	520
1501.1604	16	29	43	9	24	27	7	5	50	65	90/100	96/106	25	106/116	8	695
1501.2001	20	40	58	11	28	32,5	13	11	64	78	90/100	96/106	25	106/116	8	290
1501.2002	20	40	58	11	28	32,5	13	11	64	78	90/100	96/106	25	106/116	8	580
1501.2003	20	40	58	11	28	32,5	13	11	64	78	90/100	96/106	25	106/116	8	870
1501.2004	20	40	58	11	28	32,5	13	11	64	78	90/100	96/106	25	106/116	8	1160
1501.2501	25	40	58	11	28	32,5	13	11	64	78	90/100	96/106	25	106/116	8	290
1501.2502	25	40	58	11	28	32,5	13	11	64	78	90/100	96/106	25	106/116	8	580
1501.2503	25	40	58	11	28	32,5	13	11	64	78	90/100	96/106	25	106/116	8	870
1501.2504	25	40	58	11	28	32,5	13	11	64	78	90/100	96/106	25	106/116	8	1160
1501.3201	32	48	67	13	31	37	14	12	74	85	90/100	96/106	25	106/116	8	345
1501.3202	32	48	67	13	31	37	14	12	74	85	90/100	96/106	25	106/116	8	695
1501.3203	32	48	67	13	31	37	14	12	74	85	90/100	96/106	25	106/116	8	1040
1501.3204	32	48	67	13	31	37	14	12	74	85	90/100	96/106	25	106/116	8	1390
1501.4001	40	60	81	13	36	42,5	21	19	90	96	90/100	96/106	25	106/116	8	470
1501.4002	40	60	81	13	36	42,5	21	19	90	96	90/100	96/106	25	106/116	8	940
1501.4003	40	60	81	13	36	42,5	21	19	90	96	90/100	96/106	25	106/116	8	1410
1501.4004	40	60	81	13	36	42,5	21	19	90	96	90/100	96/106	25	106/116	8	1880

CODE	DESCRIPTION	Q.TY
9016/8016....	PREMILAMIERA / BLANKHOLDER / BLECHHALTER	1*CHOOSE REF. NEXT PAGE

MODELLO D'ORDINE / ORDER EXAMPLE / BESTELLBEISPIEL / MODÈLE DE COMMANDE

MODEL **1501.4004** OPTION CODE **9016/8016. \_\_**